

PLANTA DE SITUAÇÃO - ESCALA 1:75.000

Vértice	Plano	Azimute	Distância	Cota	Coord. Norte	Coord. Este
1	250,8538°	500,33	7225861,084	62447,1251	7225861,084	62447,1251
2	3	206,0709°	38,37	7225867,645	62447,1832	
3	4	242,5722°	25,14	7225881,209	62448,1072	
4	5	238,5741°	32,37	7225915,874	62448,1552	
5	6	242,5439°	38,22	7225954,075	62448,1959	
6	7	221,1425°	60,84	7225985,057	62448,1803	
7	8	221,1425°	60,84	7225985,057	62448,1803	
8	9	260,1702°	58,09	7225951,108	62448,2200	
9	10	277,8433°	101,49	7225815,768	62448,2410	
10	11	277,8433°	101,49	7225815,768	62448,2410	
11	12	320,3030°	42,76	7225822,420	62448,2410	
12	13	277,8433°	101,49	7225815,768	62448,2410	
13	14	201,4835°	42,01	7225828,664	62448,1716	
14	15	201,4835°	42,01	7225828,664	62448,1716	
15	16	304,0706°	33,45	7225851,723	62448,1258	
16	17	304,0706°	33,45	7225851,723	62448,1258	
17	18	304,0706°	33,45	7225851,723	62448,1258	
18	19	142,2422°	29,28	7225774,208	62448,0692	
19	20	142,2422°	29,28	7225774,208	62448,0692	
20	21	27,8514°	41,54	7225774,208	62448,0692	
21	22	27,8514°	41,54	7225774,208	62448,0692	
22	23	27,8514°	41,54	7225774,208	62448,0692	
23	24	310,0316°	60,76	7225801,408	62448,0330	
24	25	310,0316°	60,76	7225801,408	62448,0330	
25	26	310,0316°	60,76	7225801,408	62448,0330	
26	27	42,4631°	50,14	7225837,708	62448,0018	
27	28	42,4631°	50,14	7225837,708	62448,0018	
28	29	339,4938°	70,82	7225837,708	62448,0018	
29	30	339,4938°	70,82	7225837,708	62448,0018	
30	31	339,4938°	70,82	7225837,708	62448,0018	
31	32	339,4938°	70,82	7225837,708	62448,0018	
32	33	339,4938°	70,82	7225837,708	62448,0018	
33	34	100,3824°	30,86	7225847,647	62448,0338	
34	35	100,3824°	30,86	7225847,647	62448,0338	
35	36	100,3824°	30,86	7225847,647	62448,0338	
36	37	57,4234°	42,88	7225848,501	62448,0459	
37	38	45,2846°	41,87	7225848,501	62448,0459	
38	39	45,2846°	41,87	7225848,501	62448,0459	
39	40	29,1434°	43,26	7225850,112	62448,0702	
40	41	29,1434°	43,26	7225850,112	62448,0702	
41	42	29,1434°	43,26	7225850,112	62448,0702	
42	43	158,3211°	101,44	7225942,421	62448,1866	
43	44	158,3211°	101,44	7225942,421	62448,1866	
44	45	158,3211°	101,44	7225942,421	62448,1866	
45	46	158,3211°	101,44	7225942,421	62448,1866	
46	47	158,3211°	101,44	7225942,421	62448,1866	
47	48	158,3211°	101,44	7225942,421	62448,1866	
48	49	158,3211°	101,44	7225942,421	62448,1866	
49	50	242,2500°	32,01	7225952,274	62448,1866	
50	51	242,2500°	32,01	7225952,274	62448,1866	
51	52	242,2500°	32,01	7225952,274	62448,1866	
52	53	151,5648°	30,88	7225912,229	62448,1866	
53	54	151,5648°	30,88	7225912,229	62448,1866	
54	55	151,5648°	30,88	7225912,229	62448,1866	
55	56	89,9640°	37,88	7225908,662	62448,1866	
56	57	89,9640°	37,88	7225908,662	62448,1866	
57	58	151,4239°	40,70	7225917,113	62448,2033	
58	59	151,4239°	40,70	7225917,113	62448,2033	
59	60	151,4239°	40,70	7225917,113	62448,2033	
60	61	151,4239°	40,70	7225917,113	62448,2033	
61	62	151,4239°	40,70	7225917,113	62448,2033	
62	63	151,4239°	40,70	7225917,113	62448,2033	
63	64	151,4239°	40,70	7225917,113	62448,2033	
64	65	151,4239°	40,70	7225917,113	62448,2033	
65	66	151,4239°	40,70	7225917,113	62448,2033	
66	67	151,4239°	40,70	7225917,113	62448,2033	
67	68	151,4239°	40,70	7225917,113	62448,2033	
68	69	151,4239°	40,70	7225917,113	62448,2033	
69	70	151,4239°	40,70	7225917,113	62448,2033	
70	71	151,4239°	40,70	7225917,113	62448,2033	
71	72	151,4239°	40,70	7225917,113	62448,2033	
72	73	151,4239°	40,70	7225917,113	62448,2033	
73	74	151,4239°	40,70	7225917,113	62448,2033	
74	75	151,4239°	40,70	7225917,113	62448,2033	
75	76	151,4239°	40,70	7225917,113	62448,2033	
76	77	151,4239°	40,70	7225917,113	62448,2033	
77	78	151,4239°	40,70	7225917,113	62448,2033	
78	79	151,4239°	40,70	7225917,113	62448,2033	
79	80	151,4239°	40,70	7225917,113	62448,2033	

**LEVANTAMENTO PLANIMÉTRICO CADASTRAL**

OB:  SITUAÇÃO:  BROMADO

MUNICÍPIO: RIO BRANCO DO SUL ESTADO: PARANÁ

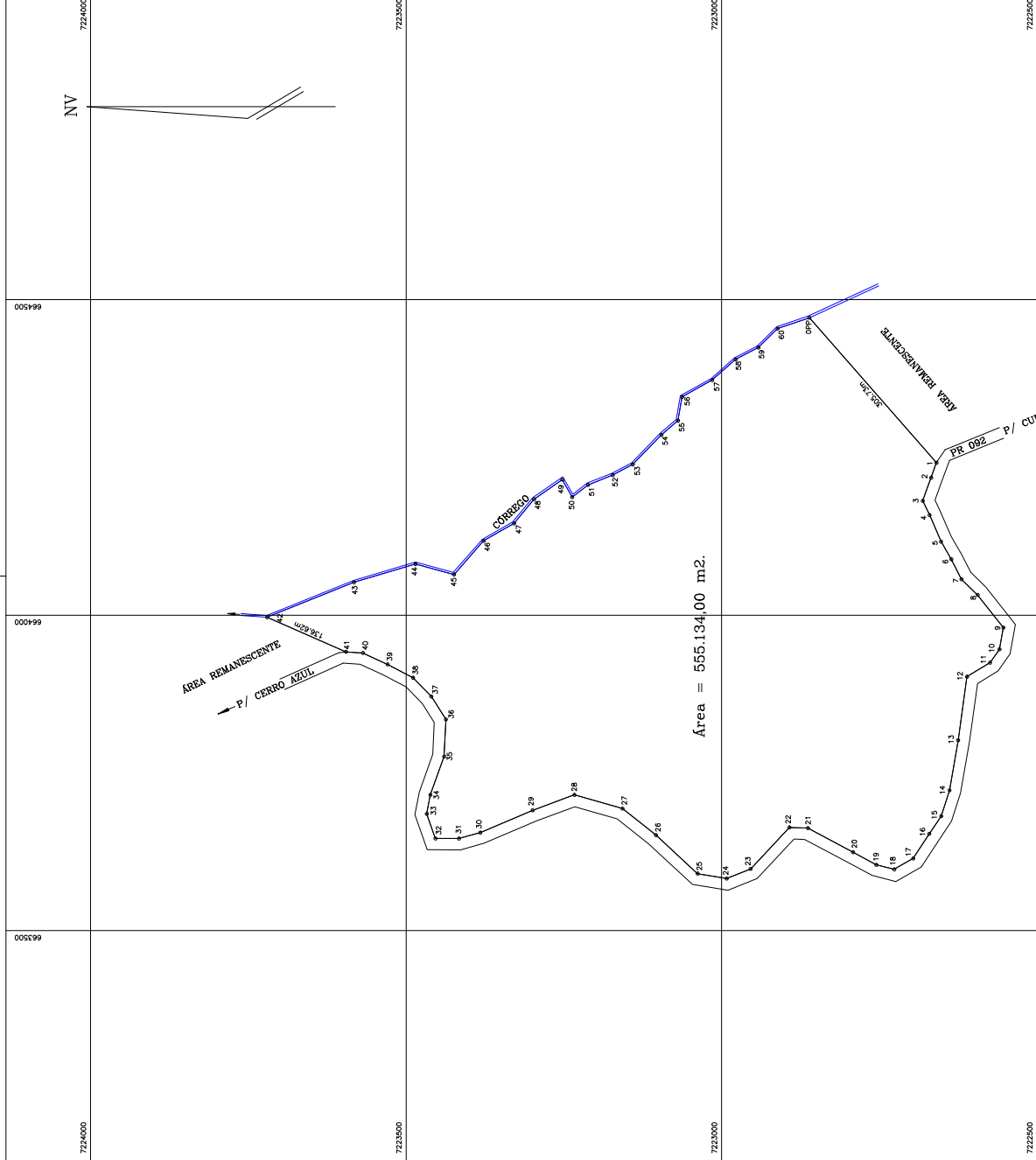
ÁREA TOTAL: 555.134,00 m<sup>2</sup> = 55.5134 ha

PROPRIETÁRIO: NAIR ZANIN RUPATO

ESCALA: 1/5000 DATA: MAIO/2022

RESP. TÉCNICO: PEDRO SEBASTIÃO FERREIRA CREA PR-188797/D

PROPRIETÁRIO: NAIR ZANIN RUPATO



CONTROLE:	INSTR.
REC:	1000/200
CH:	01
DI:	01
01:	01
02:	01
03:	01
04:	01
05:	01
06:	01
07:	01
08:	01
09:	01
10:	01

