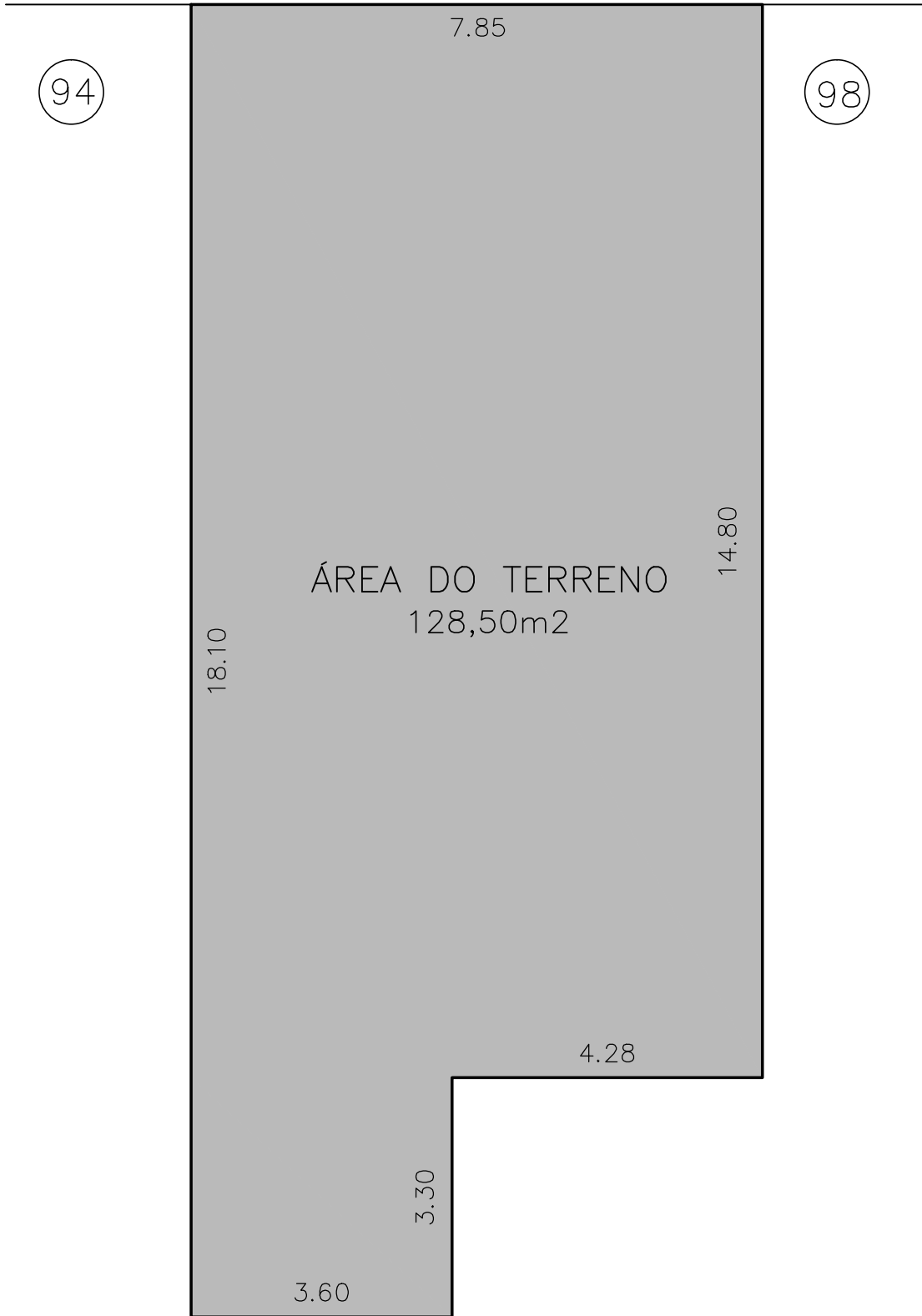
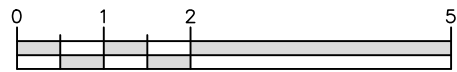


RUA TEÓFILO OTONI



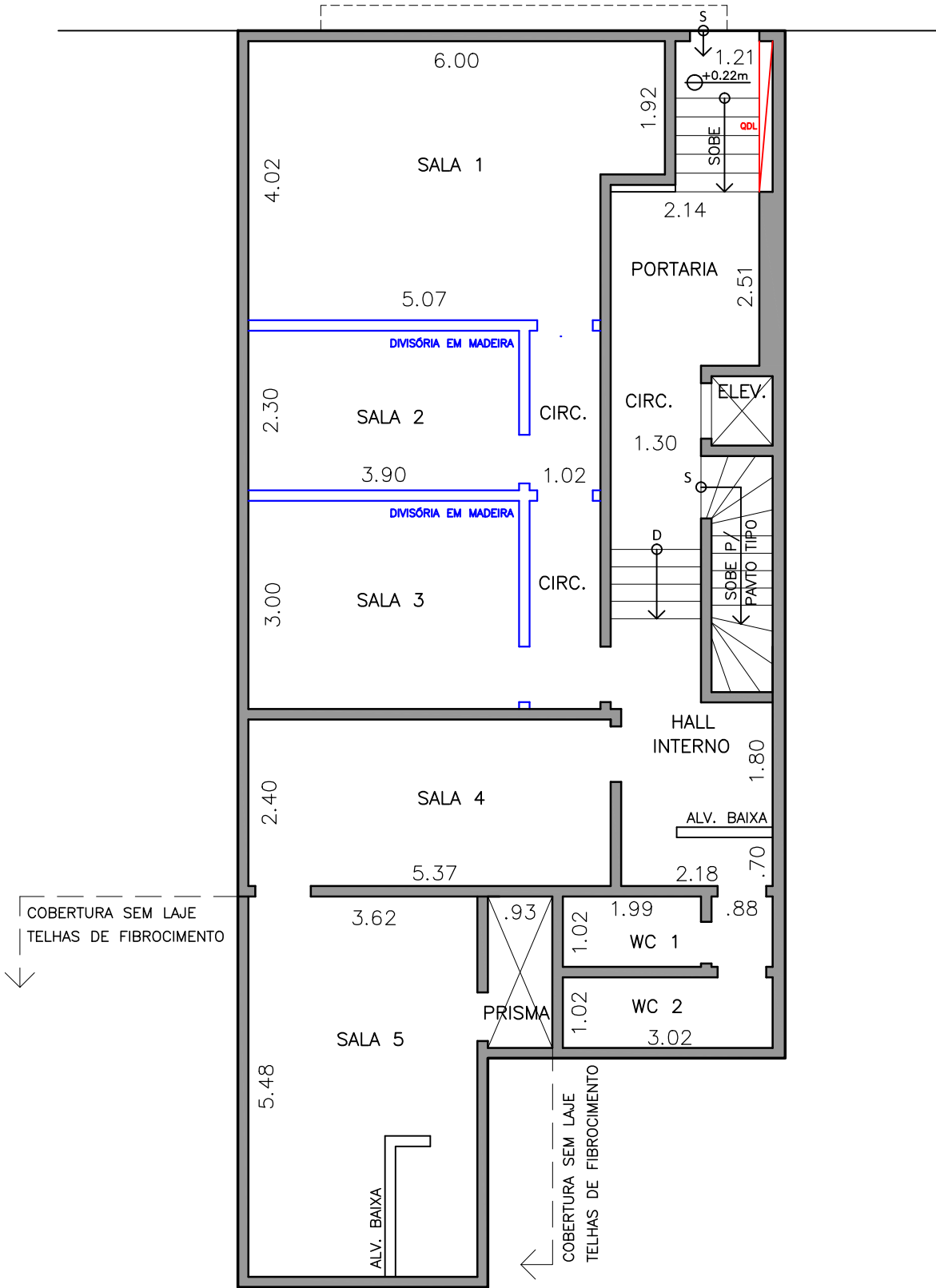
○ TERRENO - R.G.I.



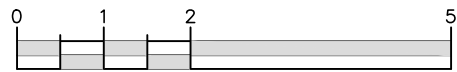
ESCALA GRÁFICA (EM METROS)

RUA TEÓFILO OTONI

ACESSO



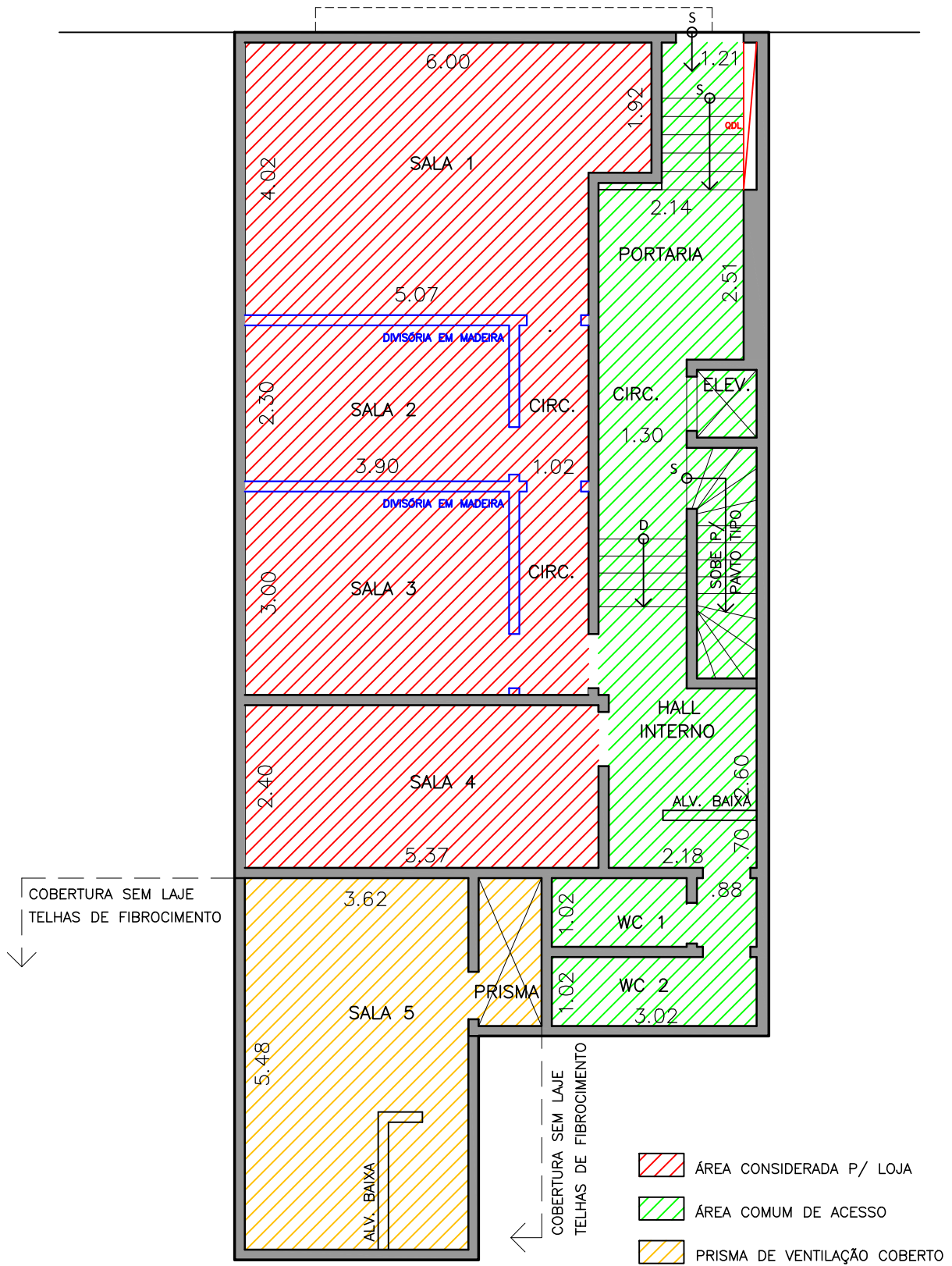
○ PAVIMENTO TÉRREO
— LEVANTAMENTO AS-BUILT



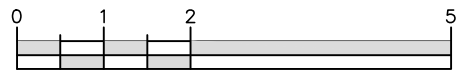
ESCALA GRÁFICA (EM METROS)

RUA TEÓFILO OTONI

ACESSO

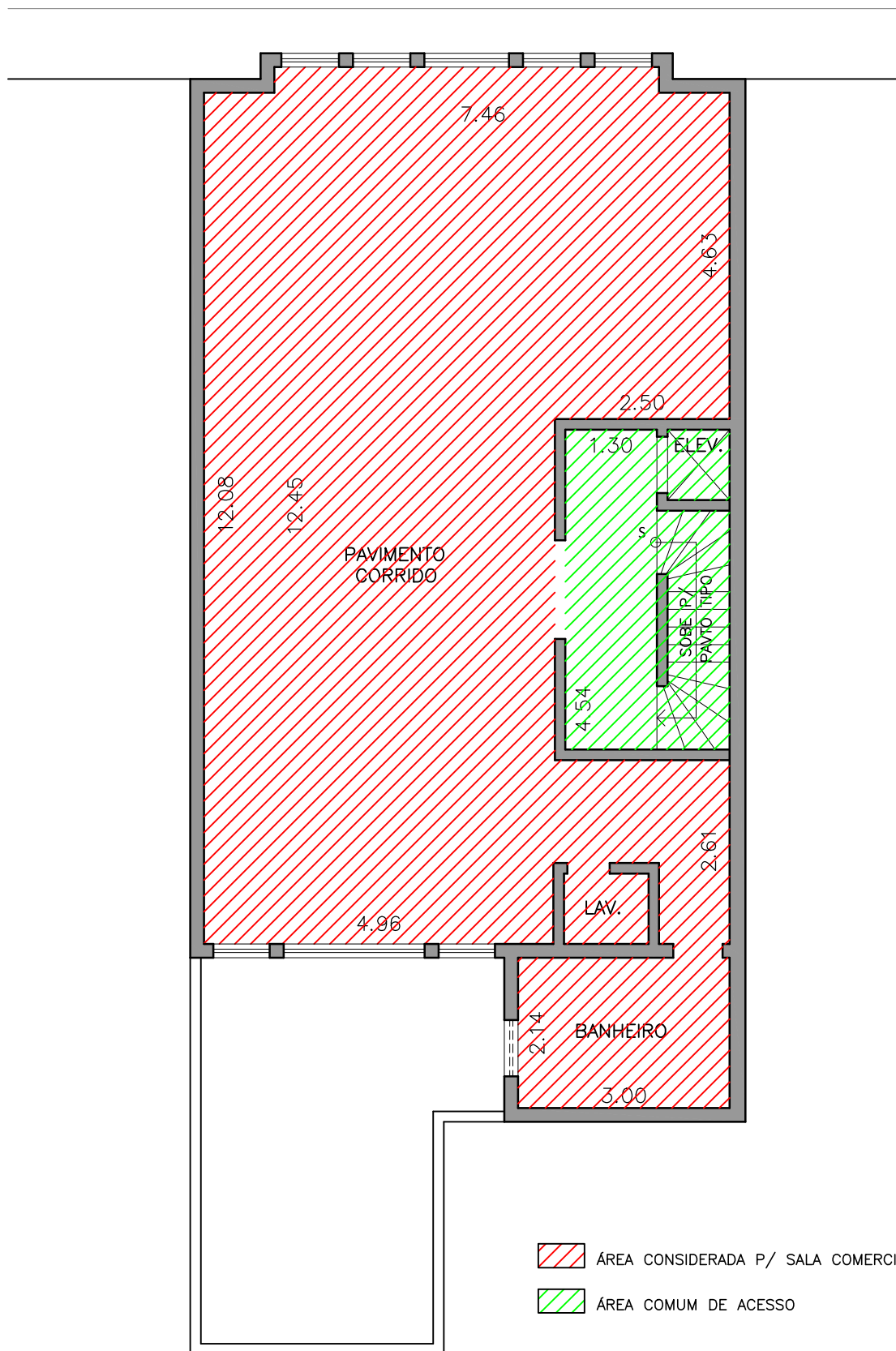


PAVIMENTO TÉRREO
ÁREA ÚTIL LOJA: 63.85m²

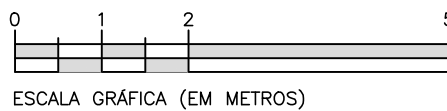


ESCALA GRÁFICA (EM METROS)

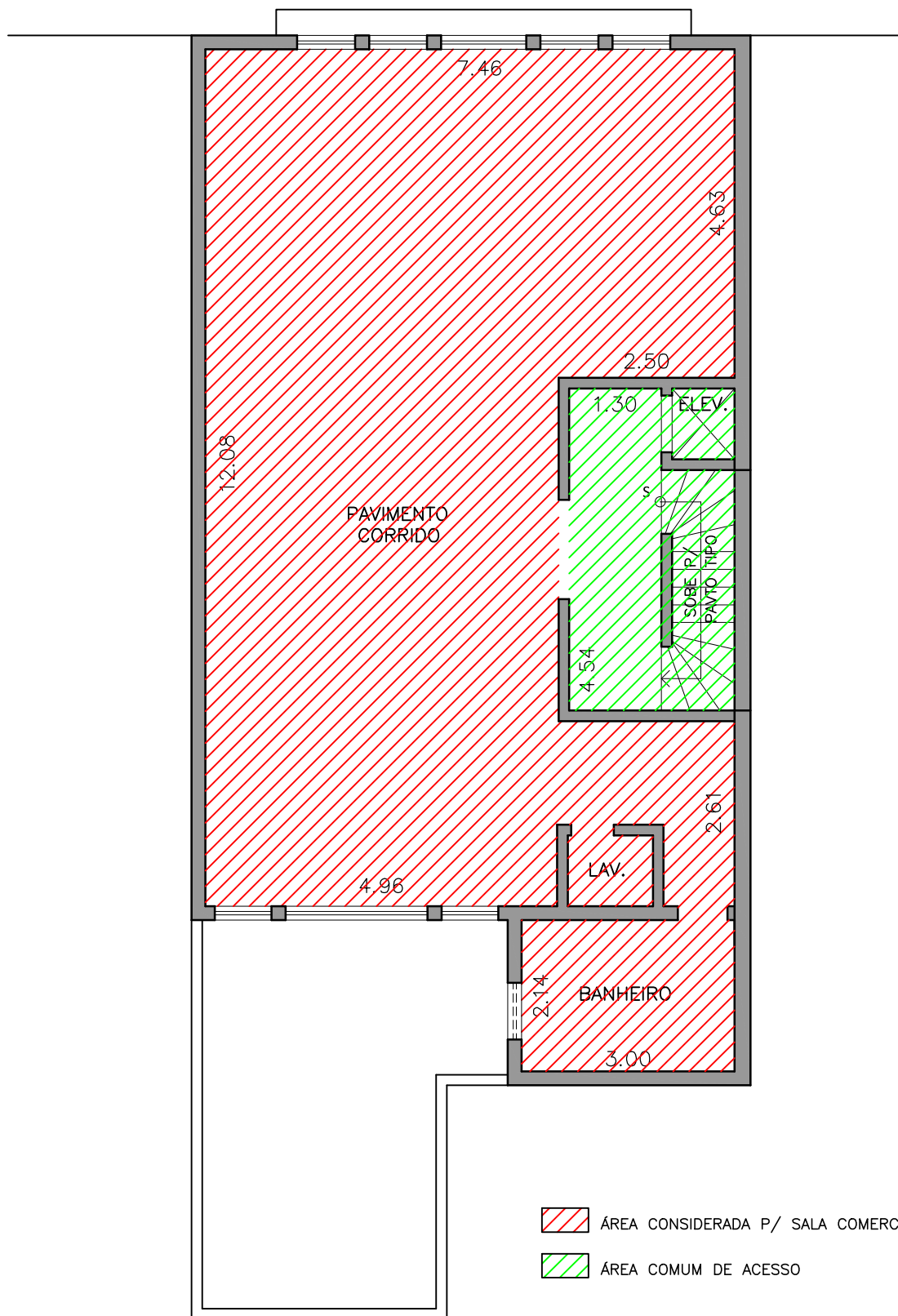
RUA TEÓFILO OTONI



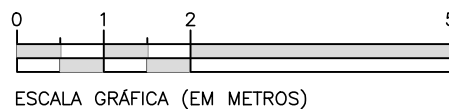
○ PAVIMENTO TIPO (2o AO 5o)
ÁREA ÚTIL: 86.75m²

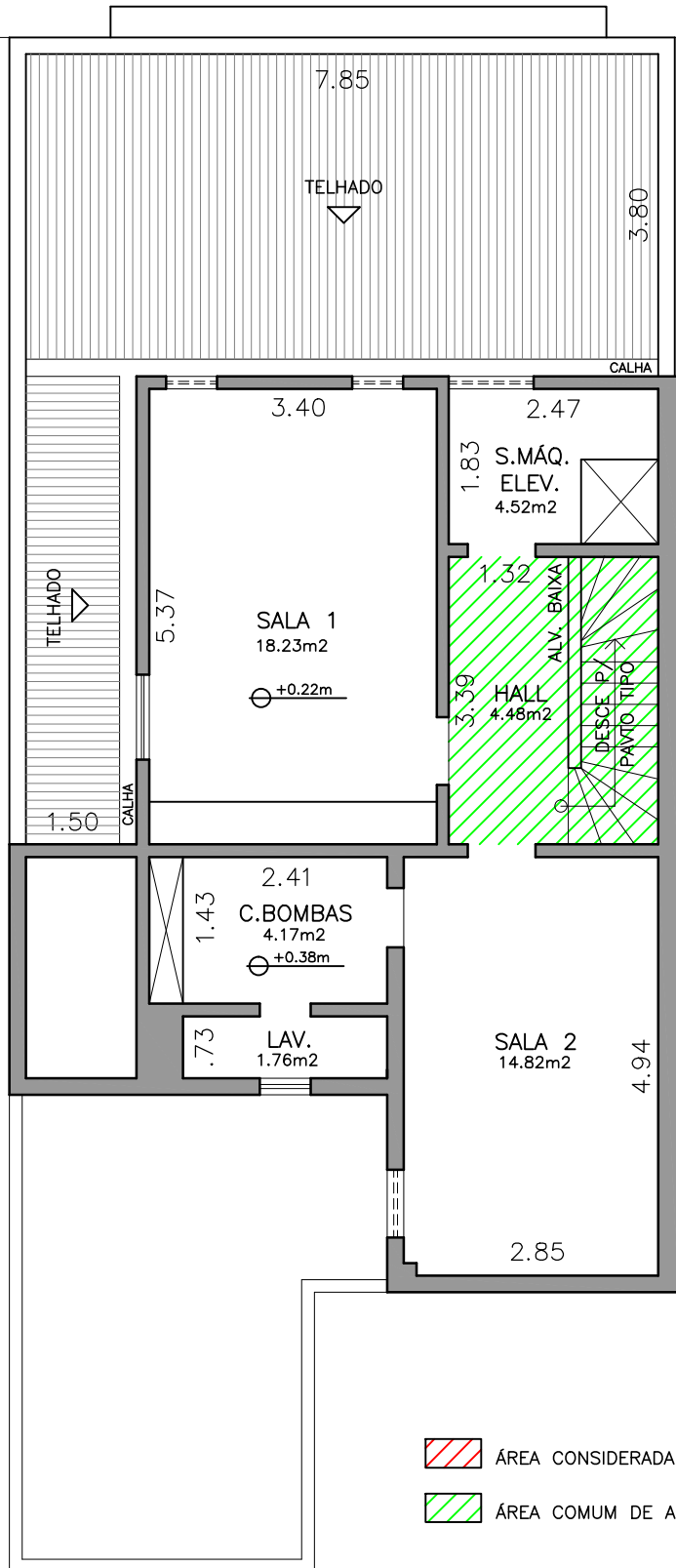


RUA TEÓFILO OTONI



ÚLTIMO PAVIMENTO TIPO (6o)
ÁREA ÚTIL: 84.75m²





- ÁREA CONSIDERADA P/ SALA COMERCIAL
- ÁREA COMUM DE ACESSO

PAVTO. DE COBERTURA

